




**MULTI CONSTRUCTION[®]
CHEMICALS**



INDUSTRIAL POLYURETHANE SCREEDS

www.mccsa.co.za



HYREZ POLYURETHANE FLOOR SCREED



DESCRIPTION

HYREZ has been infused with an exceptionally high amount of resin to provide outstanding chemical and stain resistance. Yet retaining slip resistance vital in wet areas. HYREZ is a hand applied polyurethane floor screed for light industrial to heavy duty industrial use. Highly chemical, abrasion and impact resistant, with a textured surface for added slip resistance but still allowing hygienic cleanliness and seamless flooring. Supplied in a variety of colours for use in environments that range from back of house to wash bays, warehousing to food processing areas.

TYPICAL APPLICATIONS

HYREZ can be used in food processing plants, cold rooms, canning factories, bottling plants, high foot traffic areas and environments where food safety, wet areas and heavy industrial use are all prerequisites.

ADVANTAGES

- Economical
- High early strength
- High abrasion resistance
- High chemical resistance
- High impact resistance
- High density
- Nonhazardous (food safe)
- Seamless
- Nonslip application
- Low maintenance

PROPERTIES

BS 8204-6	Type 8
Adhesion to Concrete	>1.5 N/mm ²
Shore D Hardness	75
Slip Resistance Dry	>60
Slip Resistance Wet	>40
Application Temp.	15C to 25C
Surface Finish	Textured low sheen
Application Thickness	2-12 mm
Pot Life	15 Minutes
Use Temperature	-20C to 70C
Time to Foot Traffic	12 Hours
Time to Wheel Traffic	24 Hours
Time to Heavy Traffic	48 Hours
Full Chemical Resist	7 Days
Chemical resistance includes citric acid (fruits), vinegar (50% acetic acid), lactic acid (food and dairy), alcohols, inorganic acids, fuels, hydraulic oils, mineral oils, aromatic and aliphatic solvents, common alkalis.	

STAIN, WHEEL MARKING, UV RESISTANCE

HYREZ-UVR is a squeegee / paint brush applied high build polyurethane floor coating which can stand alone or be applied over existing polyurethane screeds to boost stain resistance, wheel marking cleanability and reduce yellowing due to UV exposure. Highly chemical resistant, with slight flexibility, to give a smooth, sheen finish whilst still allowing hygienic cleanliness and seamless flooring. Supplied in a variety of colours for use in particularly messy environments like automotive workshops and pump stations.

QUALITY ASSURANCE

For HACCP regulated environments: HYREZ comes with HACCP conformance certification issued by HAS Micro Labs, verifying ongoing compliance with on-site swab testing over the duration of the floor warrantee. For Wineries and Cellars: HYREZ is organohalogene tested and approved by Thales for use in wineries and cellars. For Anti-Microbial Efficacy: On request, HYREZ can be infused with colloidal silver ions which render its contact surface bacteriostatic. HYREZ RT and HYREZ HF come with a standard 5-year and 10-year warrantee, respectively. T&Cs apply.



RANGE OF PRODUCTS

PRODUCT	SCREED THICKNESS	SURFACE FINISH	INDUSTRIAL DURABILITY	TEMPERATURE TOLERANCE	SLIP RESISTANCE WET	SLIP RESISTANCE DRY	APPLICATION TECHNIQUE
HYREZ-HF	9-12mm	Textured Matt	Very high	95C-120C	50/60	75/80	Trowel
HYREZ-RT	6-8mm	Slight Textured Matt	high	60C-75C	50/60	75/80	Trowel Spike
HYREZ-MD	4-5mm	Smooth Matt	medium	50C	N/A	60/65	Spread Spike
HYREZ-SL	2-3mm	Smooth Matt	light	50C	N/A	60/65	Spread Spike
HYREZ-UVR	0.3mm	Smooth Sheen	N/A	50C	N/A	60/65	Roll-on
MULTI CG	Various	Smooth Matt	N/A	50C	N/A	N/A	Coving Tool
MULTI WR	2mm	Smooth Matt	N/A	50C	N/A	N/A	Plaster Trowel

1. HYREZ-UVR

Hyrez-UVR is a roll-on coating that is super stain resistant and resistant to UV light. This is a perfect overcoat on existing HYREZ screeds of any thickness to give added UV and stain resistance. Particularly useful for overcoating coving material.

2. HYREZ-SL

Hyrez-SL is a self-levelling polyurethane screed at 2 – 3 mm thickness with High traffic, low impact resistance. For use in areas such as wash bays, storage areas, walkways and low intensity warehousing.

3. HYREZ-MD

Hyrez-MD is a self-levelling polyurethane screed at 3 – 4 mm thickness with High traffic, medium impact resistance. For use in areas such as back of house areas, non-motoring low load bearing movable equipment.

4. HYREZ-RT

Hyrez-RT is a trowel applied polyurethane screed 6 – 8 mm thickness with High traffic, high impact resistance. For use in areas such as food processing plants, forklift operated warehousing, heavy load bearing machine operating areas and thermal shock resistance around ovens and freezers.

5. HYREZ-HF

Hyrez-HF is a stiff polyurethane screed 9 – 12mm thickness with High traffic, high impact and high thermal shock resistance. For use in areas such as freezers and where storage with exceptional load bearing capacity is required.

6. MULTI PU PRIMER

Polyurethane primer for use to prevent blow holes and give adequate adhesion to substrates for the HYREZ screed, in particular the HYREZ-SL and HYREZ-HD.

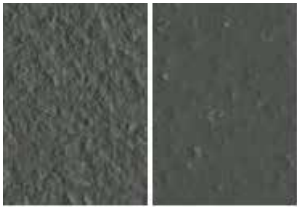
7. MULTI CG (COVING GRADE)

For the installation of covings on polyurethane screeds.

8. MULTI WR (WALL RENDER)

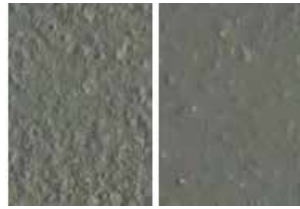
For the installation of polyurethane plaster over vertical surfaces

COLOUR CHART



RT/HF SL/MD

DARK GREY



RT/HF SL/MD

MID GREY



RT/HF SL/MD

LIGHT GREY



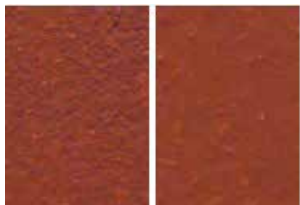
RT/HF SL/MD

CREAM



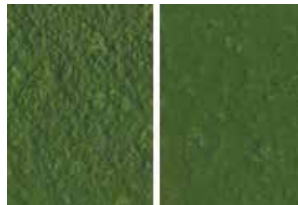
RT/HF SL/MD

BLUE



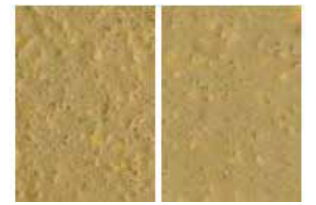
RT/HF SL/MD

RED



RT/HF SL/MD

GREEN



RT/HF SL/MD

BEIGE





MULTI CONSTRUCTION[®] CHEMICALS

ABOUT US

We are a technology driven company focusing on the construction and flooring industry. We have been manufacturing and supplying South Africa's major growth industries for nearly three decades with products, technical experience, and service.

We draw our raw material both locally and internationally, giving us the capability of developing cost effective, tailored solutions for local conditions. We have local research and developing capabilities, localised manufacturing facilities and quality assurance programmes, backed by a highly motivated team.

We localise all our manufacturing, and all products are tested to comply with the stringent quality assurance programmes to meet local and international testing standards. Our products are guaranteed when used in accordance with correct product application and instruction procedures.

CONTACT DETAILS

CAPE TOWN OFFICE

Office: 021 934 0373 | Email: saleswc@mccsa.co.za
Address: MCC Western Cape, 27 Reuben Kaye Road, Parow Industrial, 7493

KWAZULU-NATAL OFFICE

Sales: Gerard Young | 083 653 5178
Office: 031 701 2619 | Fax: 031 701 2051 | Email: natal@mccsa.co.za
Address: Unit 7 Marlmead, 4 Reed Place, Maxmead, Pinetown
